

CSC 334: TOPICS IN COMPUTATIONAL BIOLOGY

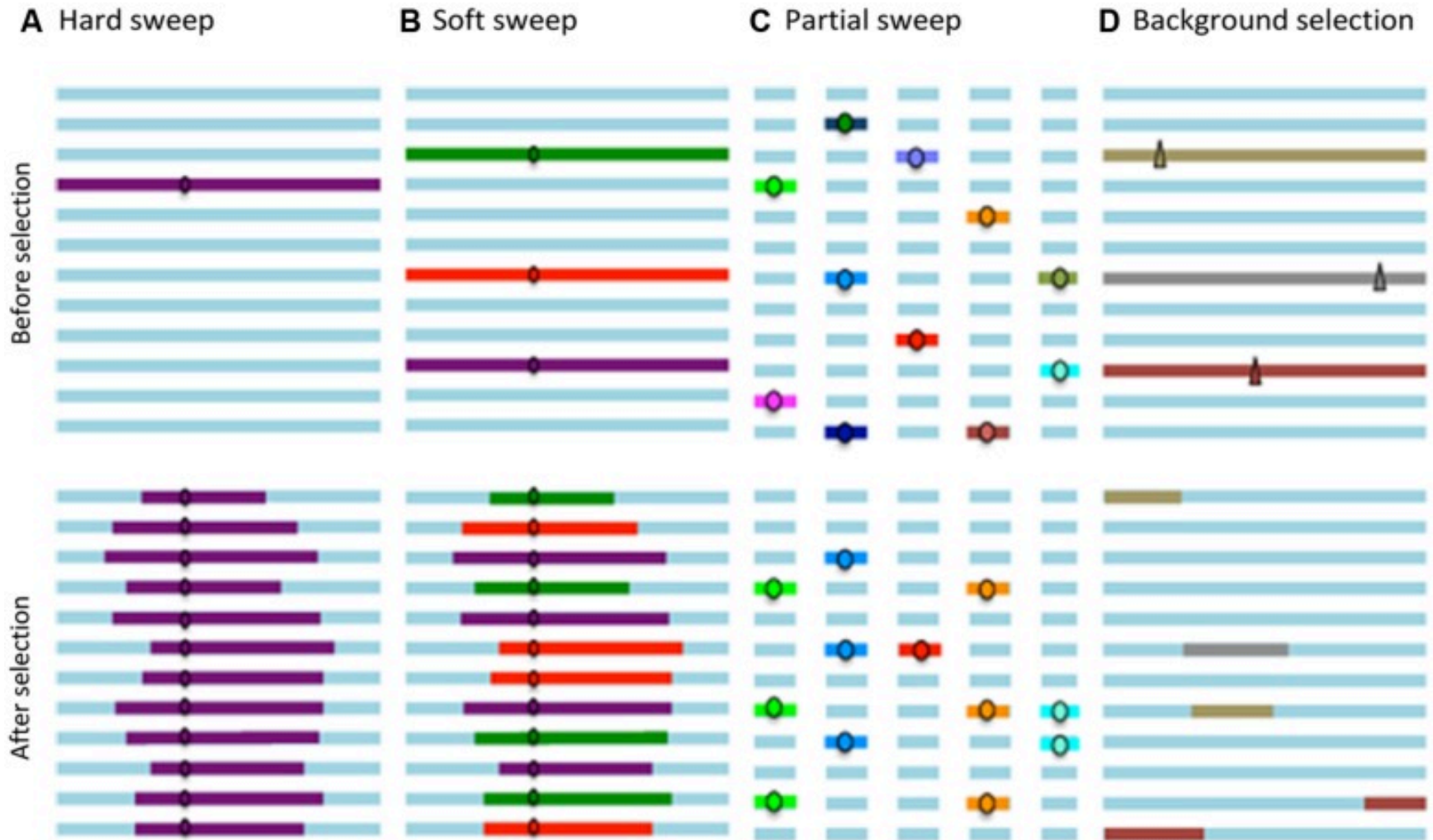
“Algorithms for Genomic Data”

Fall 2015

Smith College

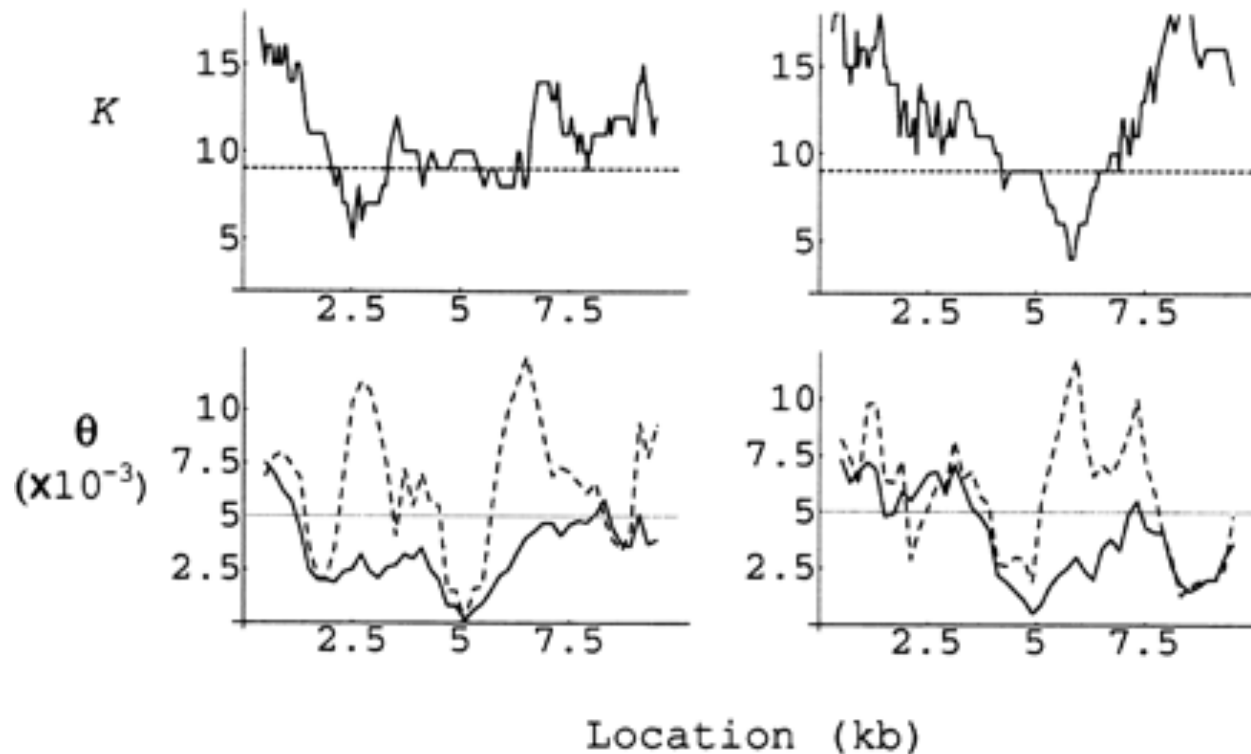
Instructor: Prof. Sara Sheehan

Types of Selection



Applications in the search for genomic selection signatures in fish (2014)

Linkage Disequilibrium based statistics



Linkage Disequilibrium as a Signature of Selective Sweeps (2004)

Macaque population structure



Cynomolgus (crab-eating) macaque
(Wikipedia)

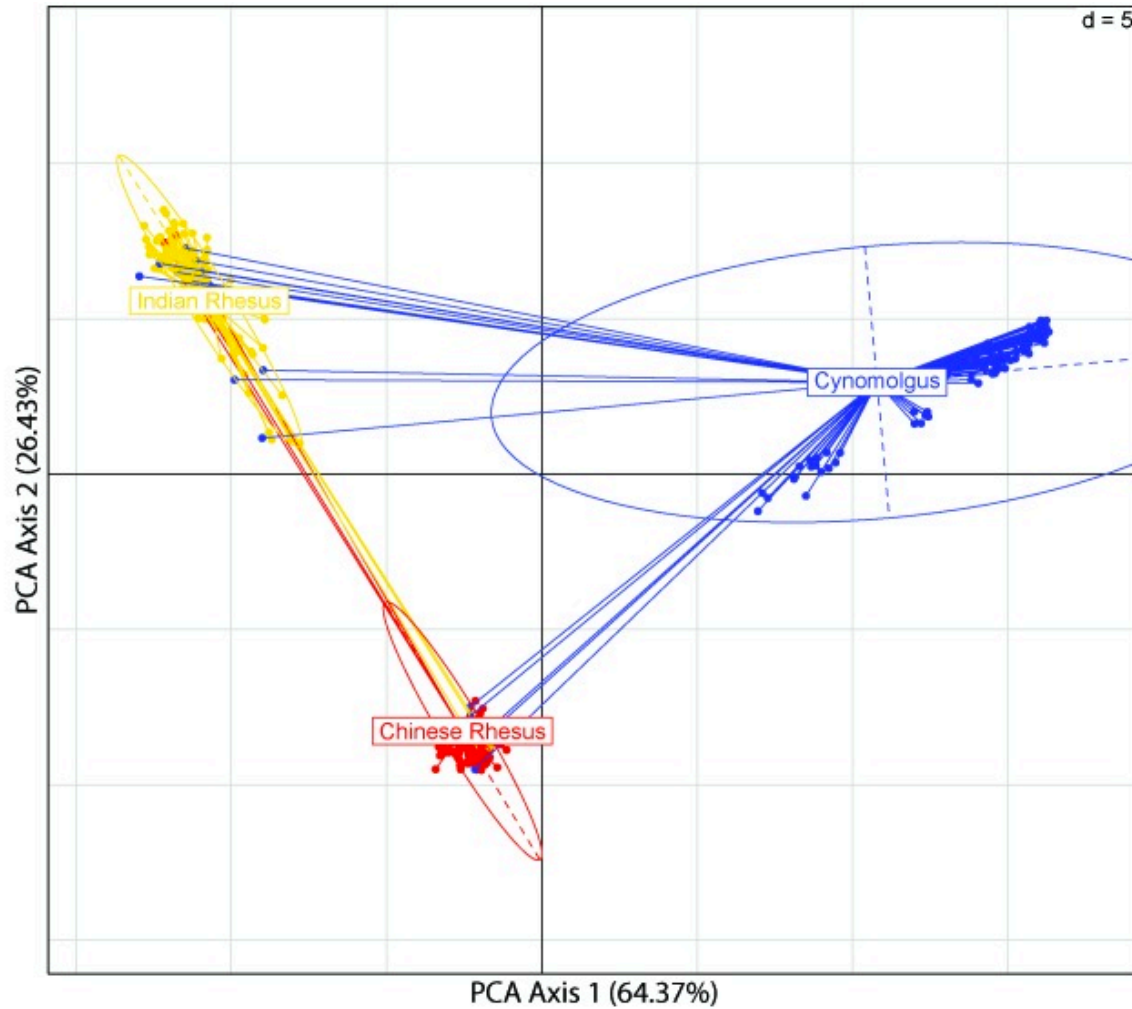


Chinese macaque (Wikipedia)



Indian macaque (Wikipedia)

PCA in Macaques



Use of Genome-wide Heterospecific Single-Nucleotide Polymorphisms to Estimate Linkage Disequilibrium in Rhesus and Cynomolgus Macaques (2015)