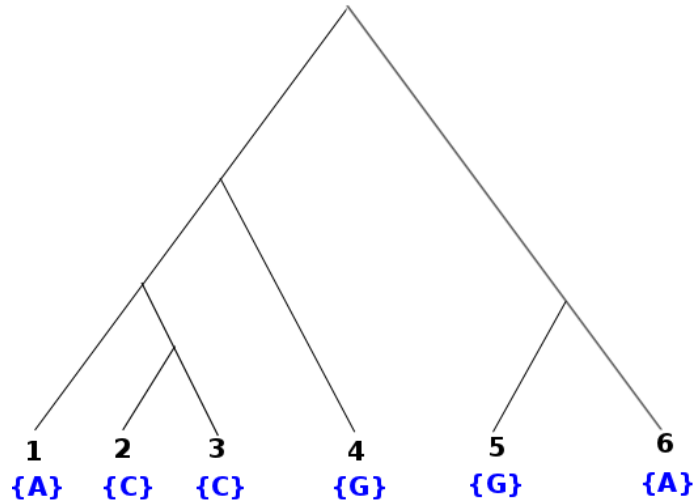


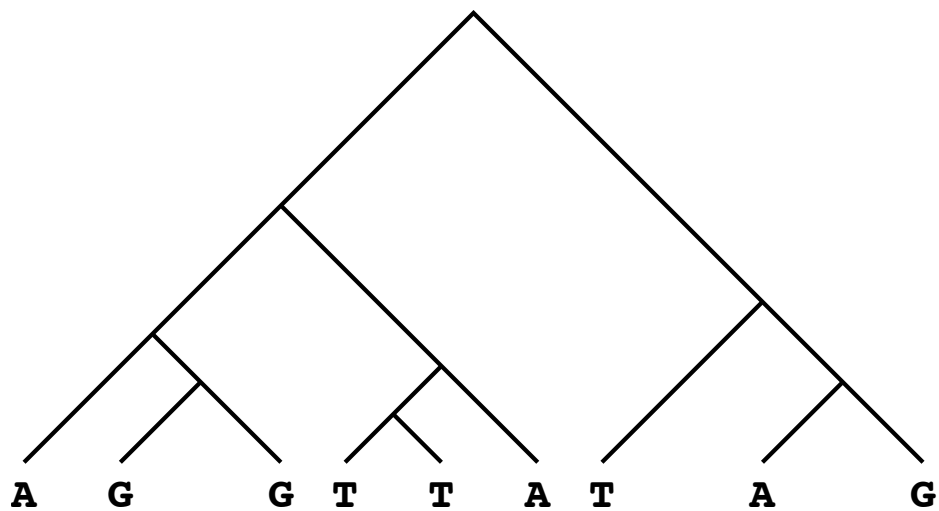
### Ancestral Reconstruction: Fitch's Algorithm

Run Fitch's algorithm on the example trees below to obtain assignments of bases to ancestral nodes.

- *Example 0:*



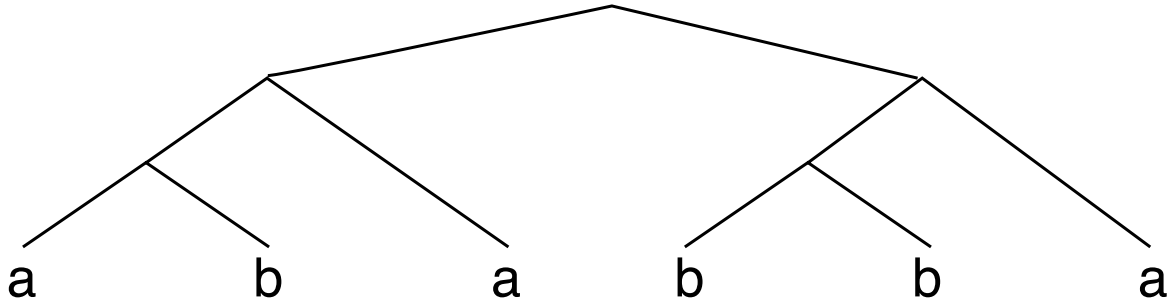
- *Example 1:*



### Dynamic Programming Version: Sankoff's Algorithm

Run Sankoff's algorithm on the example trees below to obtain assignments of bases to ancestral nodes.

- *Example 0:*



- *Example 1:*

